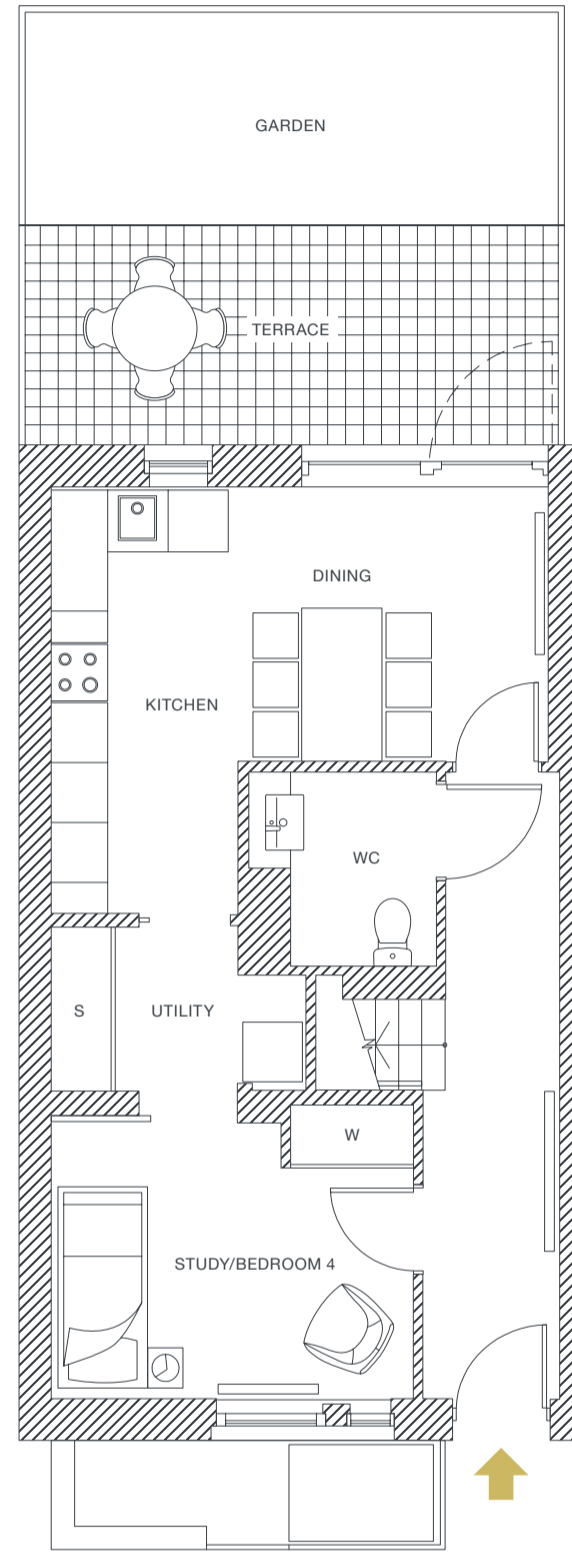
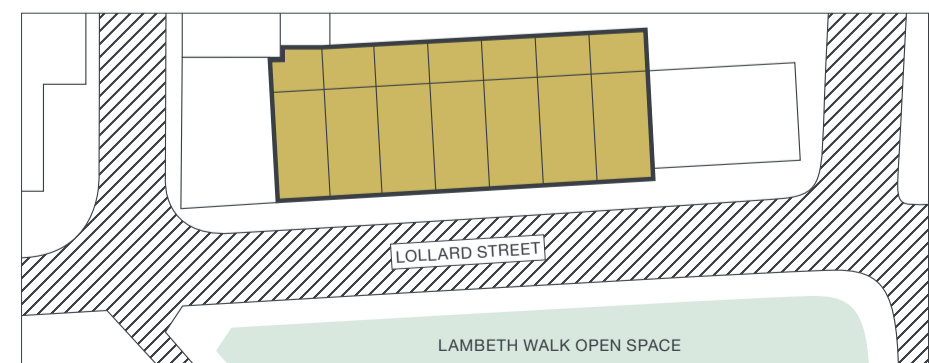


THE TOWNHOUSES

4 BEDROOMS | TOTAL INTERNAL AREA: 128.7m² (1385ft²)
THREE STOREYS | TOWNHOUSE #: 12, 14, 16, 18, 20, 22, 24

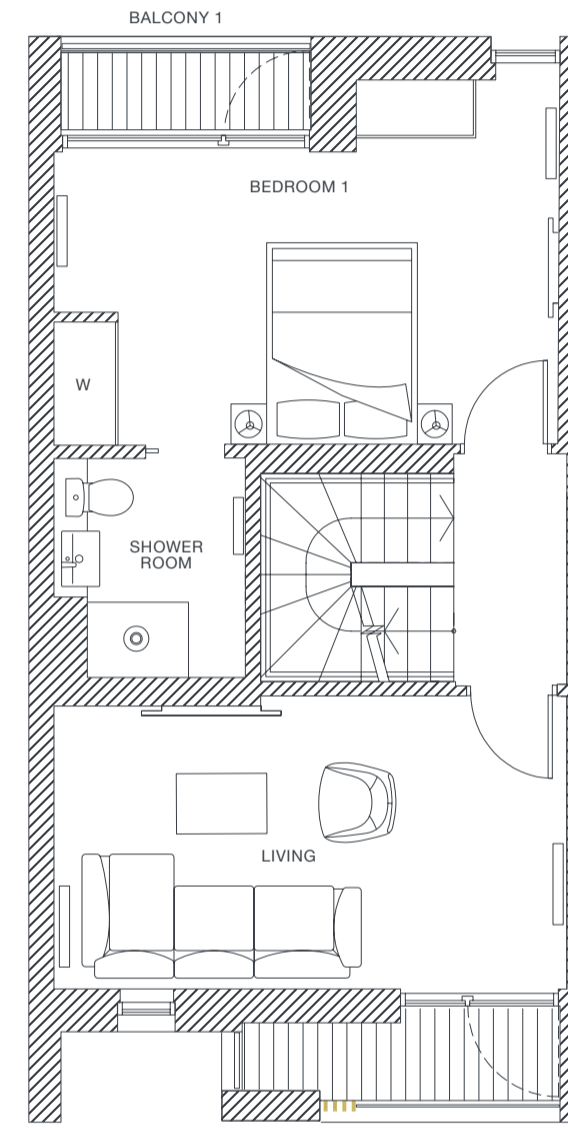


Ground Floor

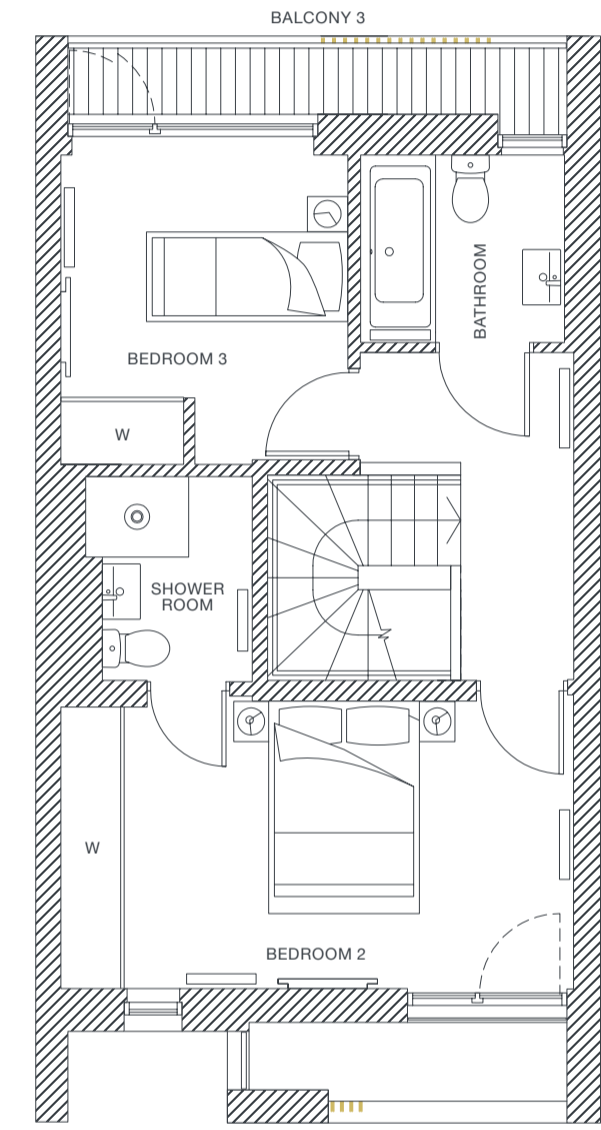


GROUND	5.0m x 15.0 (16'5" x 49'3")
KITCHEN/DINING	1.9m x 1.6m (6'2" x 5'3")
UTILITY	3.6m x 2.8m (11'10" x 9'2")
STUDY/BEDROOM 4	1.8m x 1.9m (5'11" x 6'3")
WC	

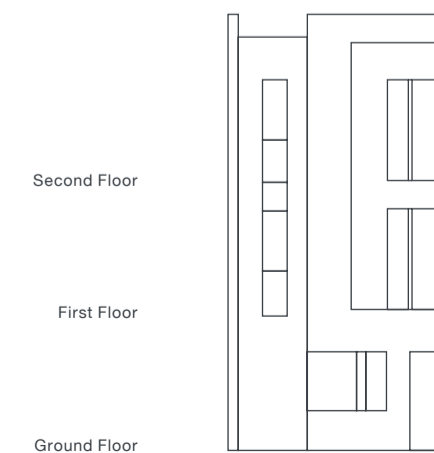
Key:
S Storage
W Wardrobe
U Utility



First Floor



Second Floor



Second Floor

First Floor

Ground Floor

FIRST	5.0m x 2.9m (16'5" x 9'6")
BEDROOM 1	2.5m x 1.0m (8'2" x 3'3")
BALCONY 1	5.1m x 2.9m (16'9" x 9'6")
LIVING	3.6m x 0.9m (11'10" x 2'11")
BALCONY 2	1.9m x 2.2m (6'3" x 7'3")
SHOWER ROOM	
SECOND	5.1m x 2.9m (16'9" x 9'6")
BEDROOM 2	2.9m x 3.0m (9'6" x 9'10")
BEDROOM 3	5.4m x 1.0m (17'9" x 3'3")
BALCONY 3	2.0m x 1.9m (6'7" x 6'3")
BATHROOM	